

# Carolock

In-vehicle wheelchair secure storage

Applicable to products:

Carolock

427885

EN Instructions for use

Thank you for choosing

# CAROLOCK from BraunAbility!

The following manual is an important part of the product, providing you with information on how to achieve maximum performance and safe operation. Keep the manual in a safe place so you can refer to it when necessary.

If you have any questions about your equipment, please contact us.

Once again, thank you for placing your confidence in our products!



Safe vehicle adaptation solutions

*For your safety BraunAbility products are  
designed and tested according to current  
directives and standards.*

## Safety information

---

- 4 Limitation of use
- 6 General guidance

## Fit and use

---

- 8 Carolock usage and emergency use

## After care

---

- 10 Equipment storage and maintenance
- 11 Warranty

"Declaration of conformity" at the end of the manual.

# Safety information

## Limitation of use

The development of BraunAbility products is a continuous process. Applications are added on a regular basis. For more details contact BraunAbility or look on the BraunAbility website.



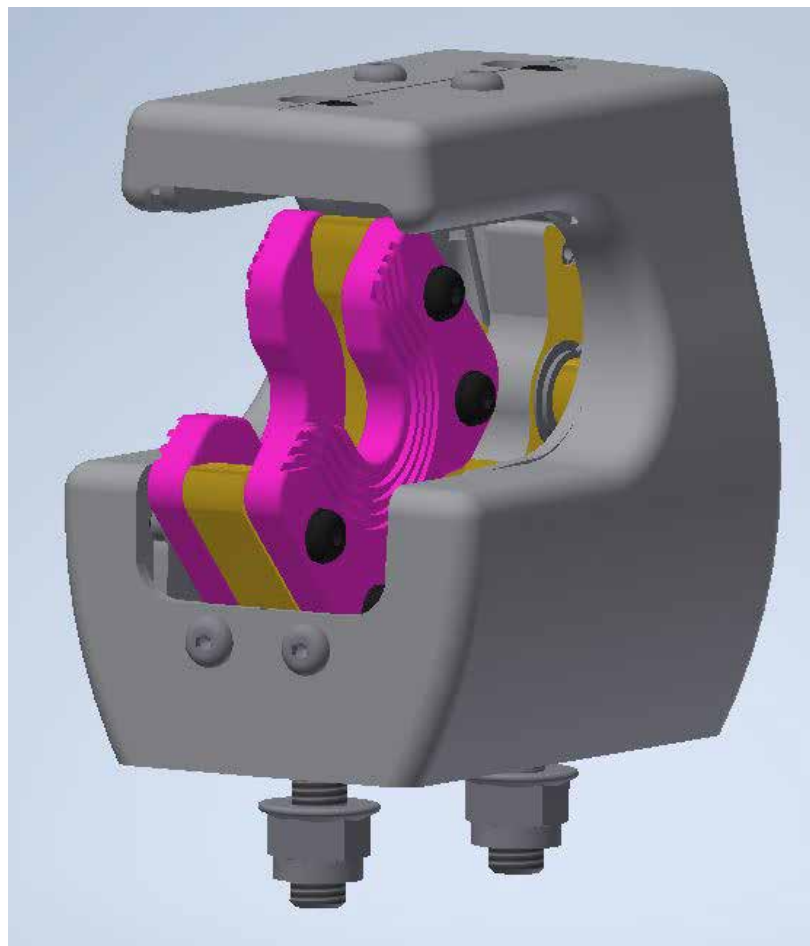
*This BraunAbility product is designed to secure an unoccupied wheelchair in a vehicle and must be used as instructed.*



*In addition to the details given in these instructions, users of BraunAbility products must refer to the wheelchair manufacturer's 'Instructions for Use in Transport' for any other specific instructions relating to use in transport.*

This guide is assuming installation bolted to the vehicle floor. For any other application, please contact BraunAbility.

Carolock



## **General guidance**

- Wheelchair Accessories that have not been approved by the Wheelchair Manufacturer must be removed from the wheelchair and secured in the vehicle during transport to reduce the potential for injury. Refer to 'Instructions For Use in Transport' provided with the wheelchair or contact wheelchair manufacturer for further guidance.
- Regular inspection of all parts is recommended and the equipment should be used only if all components are in good condition.

- Any Carolock which has been subjected to a crash situation from which the vehicle must be towed, should, in the interest of safety, be replaced.
- Do not attempt to modify the equipment. For further advice on the installation and use of this Carolock, please contact BraunAbility. Please read this manual fully before use.
- Avoid contact with corrosive liquids. Care should be taken to prevent contamination with polishes, oils and chemicals.
- The Carolock anchorages should be installed by an experienced technician/vehicle converter. Anchorages should not be installed into unsound materials such as corroded metal, wood, plastic and fiber glass panels, without additional and suitable reinforcement.
- The equipment has been tested in a configuration recommended by BraunAbility and any deviation from the recommendations here is the responsibility of the installer/user.

## Normal and emergency usage of Carolock

1. Carolock will have been installed directly to the vehicle floor, or on an appropriately rated bracket to raise it above floor height. The height of the Carolock unit will allow it to 'catch' the bar of the appropriate wheelchair.
2. Ensure that the Carolock is in the open position (Figure 1). Insert a bar of the wheelchair (Figure 2A) into the front of the Carolock unit until a positive lock is reached (Figure 2). Ensure that the wheelchair is locked into position by applying a light force back and forth on the wheelchair frame. Apply the brakes on the wheelchair.
3. To release the wheelchair, release the brakes on the wheelchair. Actuate the release handle (Figure 3) which will have been installed in an appropriate place in the vehicle. This will push the locking mechanism forward and allow the bar of the wheelchair frame to be removed from the Carolock unit locking plate.
4. If the release handle fails to unlock the unit, an emergency release button, highlighted yellow on Figure 4, can be pressed via a window in the rear of the unit. Pressing this button will manually unlock the unit and the wheelchair can be removed from the Carolock. The release cable, all moving parts and connections of the Carolock unit, release handle and connecting wire should be checked thoroughly to troubleshoot the issue.

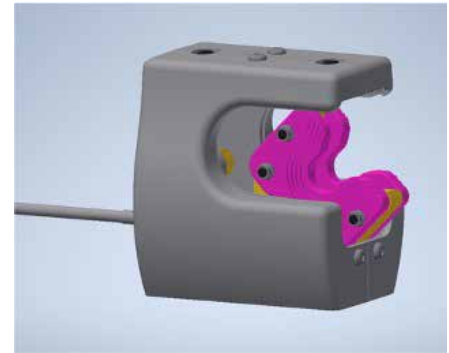
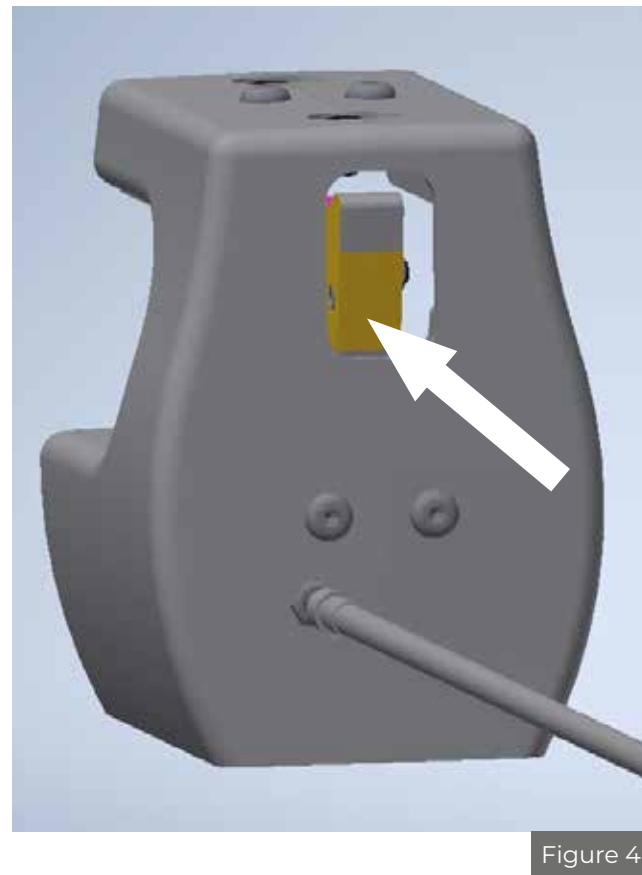
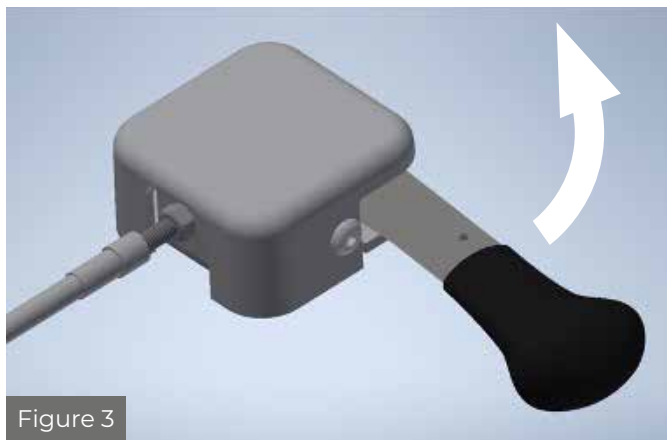
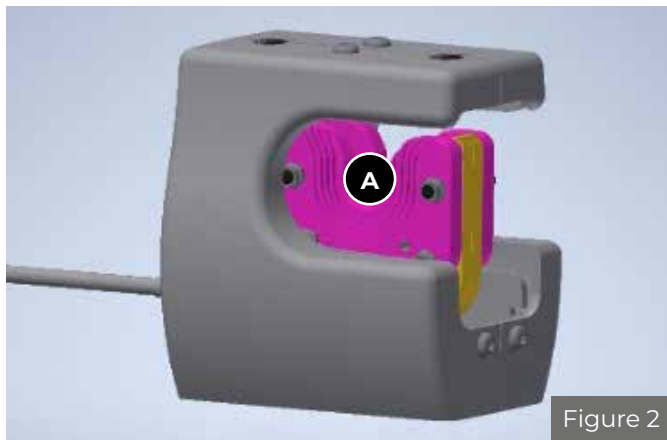


Figure 1





## After care

### Equipment storage and maintenance

- Regularly inspect the product for damage, wear or malfunction. If any problems are identified replace components immediately.
- All components can be cleaned as necessary, but care should be taken to prevent contamination of the product with polishes, oils and chemicals, particularly battery acid.
- To clean the Carolock use warm soapy water and a clean soft cloth. Rinse with clear water and allow to air dry. To disinfect, use a mild spray disinfectant and do not use products containing bleach.  
**Important: when cleaning or disinfecting, do not immerse or flood unit in the disinfectant or water.**
- If the vehicle is involved in an accident when any vehicle safety systems (e.g. airbags) are deployed, remove them from service and replace immediately. If in doubt please contact BraunAbility.

## Warranty

BraunAbility products are extensively tested and our full warranty normally only applies to BraunAbility equipment when used as instructed. For further details on specific applications please contact the Customer Service Centre. In other situations which are outside the scope of the instructions provided a limited BraunAbility warranty will apply.

# Declaration of conformity

## **Manufacturer /**

BraunAbility Europe AB  
Åkerivägen 7  
SE-443 61 Stenkullen  
Sweden

Phone: +46 302 254 00  
Fax: +46 302 254 04  
Email: [info@braunability.eu](mailto:info@braunability.eu)  
[www.braunability.eu](http://www.braunability.eu)

## **Declares that the products /**

Carolock

## **Conforms to applicable paragraphs in the following Directives, Standards and Regulations /**

ECE R14.09  
ECE R21.01  
ISO 10542-1:2012 (Annex E § E2b)  
ISO 3795

BraunAbility, August 2023



Accredited by SWEDAC as testing laboratory in accordance with ISO/IEC 17025:2018  
Quality system certified in accordance with ISO 9001:2015 and ISO 14001:2015

Illustrations, descriptions and specifications in the user manual are based on current product information.  
BraunAbility Europe AB reserves the right to make alterations without previous notice.  
© 2023 BraunAbility Europe AB



**BraunAbility Europe AB**  
Åkerivägen 7  
SE-443 61 Stenkullen  
Sweden

Phone: +46 302 254 00  
Email: [info@braunability.eu](mailto:info@braunability.eu)

[www.braunability.eu](http://www.braunability.eu)