

## Installation manual Martech SpaceFloor

• Checklist for installing the SpaceFloor	2
• Cutting out for the wheel arch/ gaps	4
• Heating installation	5
• Pipes control before installing the floor in the vehicle	6
• Carpeting the floor	7
• Priming/Cleaning the SpaceFloor and the bottom of the vehicle	9
• Gluing the floor into the vehicle (based on the 200 litre drum)	10
• Installing the SpaceFloor into the vehicle	11
• Gluing the floor into the vehicle (based on the 600ml sausages)	12
• Security of the SpaceFloor	13
• Finishing the installation of the SpaceFloor	14

## Installation manual

This is the installation manual for the Martech SpaceFloor. If you follow the instructions in this manual, it is very simple to install the SpaceFloor the right way.

**WARNING:** NEVER USE SILICONE SPRAY in the environment where the gluing process is done.

### Needed for installation of the Martech SpaceFloor:

- **The ordered SpaceFloor**
- **Glue: Martech 2004 MS**

Expected for 3200mm	12 pieces of 600ml	(840grams)
Expected for 4200mm	15 pieces of 600ml	(840grams)
Expected for 4500mm	17 pieces of 600ml	(840grams)
Expected for 4900mm	18 pieces of 600ml	(840grams)
- **Primer: Martech 04 primer**

Needed 250-500ml
------------------
- **Safety Brackets**

Needed 1 Safety Bracket for each rail.
If the rail is cut off at the wheel arch, needed is also a Safety Bracket in front of the wheel arch.
(Always delivered with the SpaceFloor)
- **Cork pieces 3mm distance bracket**

For 3200mm	16 pieces
For 4200mm	16 pieces
For 4500mm	20 pieces
For 4900mm	20 pieces
(Always delivered with the glue)	

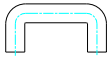
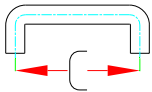
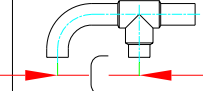
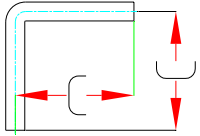
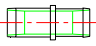
### Needed for floor covering

- **Airline rail 2004:** 2 mm **standard** floor covering.
- **Multiline rail:** 2mm **soft** floor covering. (can be ordered at Martech)
- **Martech Special double glue tape:** Length of the roll is 50 meter  
(The tape can be ordered in different width)

## Needed for floor heating

- Activator VS220 (HENKEL) 90ml
- Locktight SEAL46 (OMNIFIT) 50 or 250ml
- Pipe cleaner
- Countersinking tool Ø20mm
- Hose clip Blue ABA08 15-24mm (Swedish pat.)

### Martech hoses:

	Hose C= 95 mm	No.: C130
	Hose C= 145 mm	No.: C145
	Hose C= 95 mm	No.: 135
	Hose C= 138 mm	No.: 104
	Hose union	No.: 110

The above shown hoses is ordered together with the layout of the SpaceFloor.

## Cutting out for the wheel arch/ gaps

Cutting the wheel arch and gaps out of the SpaceFloor.



All measurement shall be taken from the center of the vehicle (Do the same when you measure the SpaceFloor)

Measure the distance to the wheel arch in the vehicle and draw it on the SpaceFloor.

Do the same for the gaps.



Use a saw to cut out the pieces of the SpaceFloor. (Don't forget the lubricator)

Cut the corner with a compass saw.



Cut the gabs with a compass saw.



## Heating installation

### **Never connect the floor heating system with the engine!**

Always use a Webasto or Eberspächer heater to make the heating system in a closed circuit.

If there is no floor heating required go to the floor carpeting.



Here you see what you need to install the aluminium pipe (hose union) into the floor. First of all clean all the hose unions with alcohol or thinner.

You start to counter sink the profiles in the floor. (Just for removing the sharpness of the edges of the pipes)

Do the same for all the pipes you want to use for floor heating.



Now you clean the pipes with an air pistol (be sure to remove all the dirt and aluminium pieces)

Spray the activator on your pipe cleaner.

Put the pipe cleaner in the pipes and turn it around. Be sure to distribute the activator evenly.



Put the pipe cleaner into the next pipe. That way you always know where you are in the process. Twist the locktight twice around the hose union (be sure the locktight is min. 2 mm. from the edge)

Always use a nylon hammer and be careful to hit it straight into the floorpipe.

After 30 min you can start to put on the hoses.

## Heating installation



When you mount the hoses be sure to use the right hose clip:  
Blue ABA08 15-24mm

For easy installation, use any kind of lubricator on the hoses.

You can always cut the different hoses for getting the right length.

**NEVER USE SILICONE SPRAY!**



If you need to make the hoses longer, you can connect them with a brass connecting part.

**NEVER USE STEEL OR IRON!**

If you have double wheel arches then you should install floor heating in both sides (front and back of the wheel arch) of the floor.

If you have single wheel arches you can make the heating only in between.

Look at the drawings for floor heating at:

**Example 1** with double wheel arch

**Example 2** single wheel arch

## Pipes sealing inspection before installing the floor in the vehicle



You need two pieces of hoses which are sealed in the end with a bolt. You also need a hose to fit between the floor and your air regulator.

Now connect your air regulator to your air system.

**NEVER USE MORE THAN 2 BAR FOR THE INSPECTION !**

When the air pressure is on (MAX 2 BAR) use your location spray to control the hose unions to find any leak in the system.



## Carpeting the floor

The following steps show how to mount the Martech double gluing tape on the carpet. It is also possible to mount the Martech double gluing tape directly on the SpaceFloor instead.



Start cutting the carpet rolls in the right measure. If you use other floor covering than the soft Martech carpet you have to clean the back side with spirit.

Put the Martech double glue on the backside of the carpet. (You can also put the Martech tape directly on the SpaceFloor!)

If you don't have the right dimension in stock, just put on what you have in stock and cut the overhang away.



After preparing all the pieces you need to cover the floor. Start cleaning the SpaceFloor with the air pistol to remove all the small pieces of aluminium and dirt from the cutting.

Now clean the whole floor with spirit or thinner.

You can start the floor covering where ever you want to!

When the distance between two rails is less than 173mm, you remove the backside of the tape and put the floor covering between the rails



Now press the center of the carpet down.

Be sure the tape have good contact to the carpet and the floor.

Preparing for the next lane.

## Carpeting the floor



When the floor covering is wider than 173mm, only remove about 1 meter of the protecting paper from the tape.

Now fix the floor covering exactly in the middle of the two rails.

Push down the covering into the right positioning. Use for example a screwdriver or a tool for installing windows. Be sure not to damage the rails or the floor covering.



Move the tool alongside the rail for about a meter, and continue on the other side. Continue this step all the way down the floor.

Be sure the tape have good contact to the carpet and the floor.



## Priming/cleaning the SpaceFloor and the bottom of the vehicle

Needed:      Martech 04 primer, Needed for 320cm floor: 250-500ml

The Martech primer is a wash primer and cleaner which means that you can use the primer for cleaning the bottom of the SpaceFloor and the floor of the car. At the same time you have done the priming!



For your health security always use a mask and rubber gloves. (Read the Martech instructions for primer 04 for further information.)

Start by cleaning/priming the bottom of the SpaceFloor. Always use non fluffy white cloth, tissue or paper.

Do the same on the floor of the vehicle.



Now mark the position of the rails of the SpaceFloor on the floor of the vehicle. (Use for example a piece of wood for transferring the position) Now you are sure of the position for the glue.

Do the same in the front of the vehicle. (If you need more marks, use the procedure.)

Now mount the distance brackets (3mm cork). **Don't walk/touch the primed area!** Use a piece of wood/carton for protection. Don't forget to put a line of cork where you expect to place the safety brackets. (See page 13)

## Gluing the floor into the vehicle (based on 200 litre drum)

Needed: MarTech 2004 MS glue

(See the MarTech supplier manual for glue 2004 for further information)

The MarTech glue 2004 MS is developed specially for the SpaceFloor.  
All our test are based on this glue (starting from the 2004 system)!



The example of this installment is based on a 200 litre drum.

**For installing with a 600ml saucages see page 10.**

Start gluing in the front of the vehicle.

**Don't walk/touch the primed area!**

Use a piece of wood/carton for protection.





## Installing the SpaceFloor into the vehicle



In this manual we use a fork lift to handle the floor.

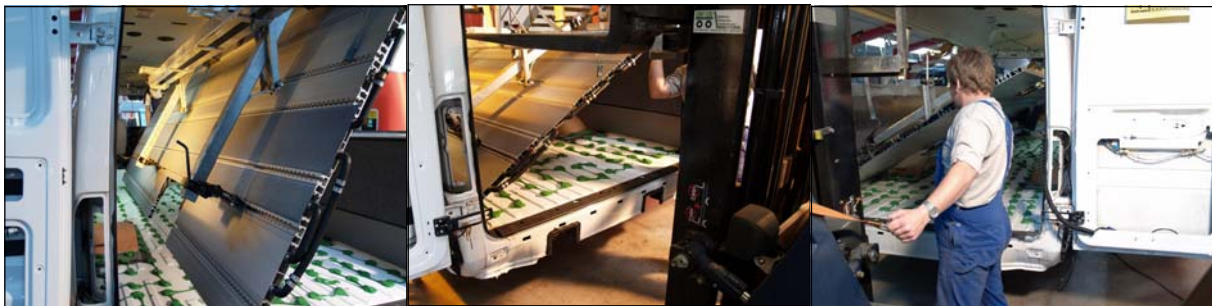
(this is only an example)

You are free to develop your own solution to handle the floor.

**You can also order SpaceFloors in sections for easy handling by hand.**

If you use a fork lift it is a really good idea to put a jack under the rear axle assembly. That way you can move the car from side to side when you lower the SpaceFloor.

With the fork lift you move the floor into the vehicle in an angle.



When the glue is still wet, you move the SpaceFloor to the right position of the vehicle.

Be sure all positions is correct.

Also for the wheel arch. **Now walk around for pressing the glue. Make sure the floor touches the cork.**



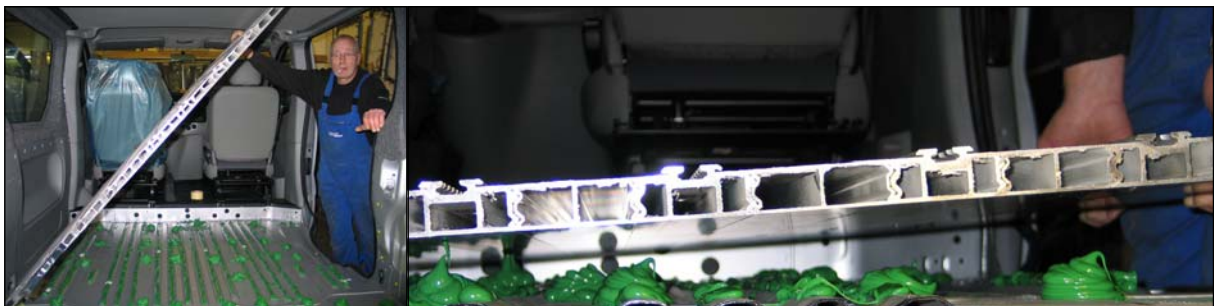
## Gluing the floor into the vehicle (based on the 600ml sausages)

Use also Martech booster 2005 system (based on the 400ml sausages)

(See the Martech supplier manual for glue 2004 and booster 2005 for further information)



In a smaller van you can install the SpaceFloor by hand. For gluing use the side- and the backdoors for easy access.



If the rails positioning are not over the lines of glue, you need to make extra spots of glue for every 40-50cm under the rail.

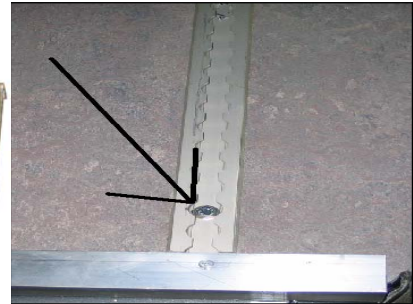
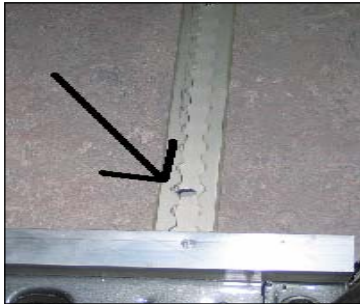


### Martech 2005 Booster system

With the Booster system you get 50% hardening in 24 hours. Also needed in closed environments.

## Security of the SpaceFloor

For each rail there is a Safety Bracket needed. If the SpaceFloor is cut at the wheel arch there is also a Safety Bracket needed in the front of the wheel arch.



For every rail you need a fixing point for safety. Place the safety bracket as far behind as possible and as close as possible to a cross member/back panel.

The bolt behind only need to be a M8 and quality 8.8. the length depends on the construction under the vehicle. **We recommend a stainless steel bolt.**



When the glue is fresh be careful not to tighten the SpaceFloor too hard to the body!  
Always use the not with the plastic safety lock.



## Finishing the installation of the SpaceFloor



**The correctly installed SpaceFloor**